



*We light the world
regardless of your location
or the situation, We can
fulfill all of your needs
through our regional offices*



Headquarters
Nairobi - Kenya

Regional Offices
Kigali - Rwanda
Kampala - Uganda
Dar es salaam - Tanzania

CIC Plaza 3rd Floor, Mara Rd, Upperhill.
P.O. Box 15913-00100 Nairobi, Kenya.
Tel: +254 02 2725134,
Fax: +254 20 2720653,
Cell1: +254 72465222 Cell 2: +254 733652222
email: info@soliton.co.ke
www.soliton.co.ke

*Multiple
Solutions at the
Speed of Light*



We offer a variety of options to create the highest quality custom telecommunications solution for your business.

Company Profile

Soliton Telmec is leading the way for providing integrated solutions for fibre optic networks, copper networks. Data transmission systems and microwave links.

Soliton Telmec has established an outstanding reputation in East Africa in this ever changing field.

The solid experience achieved and the in-depth technical expertise allows us to provide our customers with solutions of high technological level, for a wide range of telecommunications and enterprise networks.

Solutions and Services

- Fiber Optic networking planning and design
- Fiber optic network construction
- General and DWDM Fiber analysis and characterization.
- Fiber optic network documentation and GIS mapping
- Network maintenance support
- Supply of tools and test gear
- Enterprise network design and construction

Why Us

We provide the latest network access solutions in the field of telecommunication voice and

data networks. We have emerged as a prominent provider of reliable and cost effective telecommunications solutions.

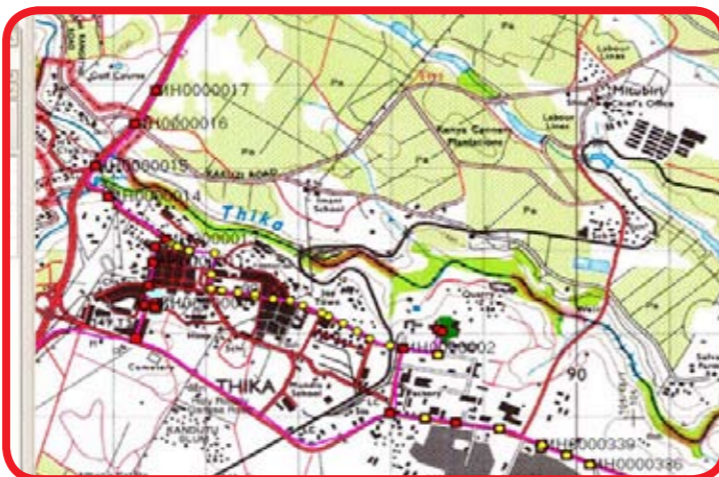
Outside Plant Construction



Soliton Rock Trencher at work

- Fully automated civil works construction techniques
- Rock and soil trenchers
- Micro - tunneling technology
- Fiber blowing techniques
- Open access FTTx design, construction and management

Documentation



Soliton Telmec's Connect Master platform will capture, store, analyse, manage and present data that is referenced to a GIS database. The data could refer to your fiber characteristics, manholes, duct routes, connectors etc.

Test and Measurement Solutions

As the local agent for EXFO, Soliton Telmec offers a comprehensive suit of test and measurement solutions ranging from fiber characterization solutions, all the way to protocol testing and research and development test gear.

Network Monitoring Solutions

No more need to waste maintenance time testing. Soliton Telmec offers EXFO's remote monitoring solutions.

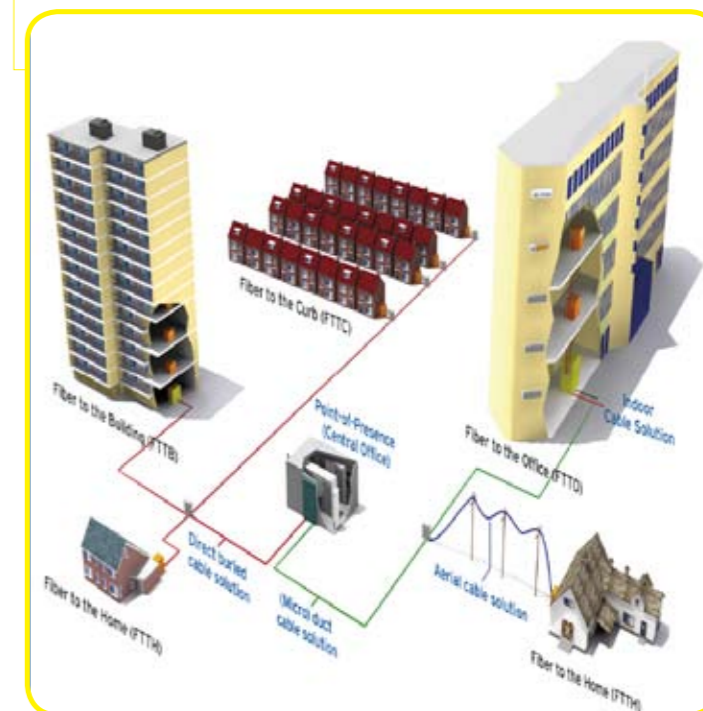
Whether you want it as a stand-alone terminal or a complete network quality monitoring platform, Soliton will provide and implement it for you.

Key Features and Benefits

- All-one remote OTDR testing and monitoring functions
- Multitasking test systems for multiple users
- Discovery and auto-provisioning functions
- SMS-triggered test-on-demand
- Flexible alert subsystem
- OTDRs offering high measurement range and peak-level monitoring
- Secure and seamless intergration with your LAN
- Affordable Monitoring at your own pace
- Remote, stand-alone unit

FTTX Solutions

Both Fiber to the home (FTTH) and fiber to the office (FTTO), involve the installation of a direct fiber connection to the residence. They efficiently enable advanced, converged communications technologies, including multiple channels of high definition television and full video. In addition, they aid in entering new applications like VOIP and IPTV to the house and office.



Microwave

As an alternative to cable communication channels, Soliton Telmec offers comprehensive and cost-effective PDH, SDH and IP backhaul installation solutions to fixed cellular network operators, service providers, private networks and enterprises

Soliton Telmec helps its customers to capitalize on quality voice and data transmission throughout their network.